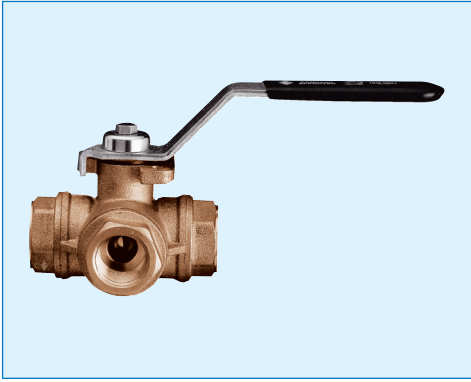


CR-TEC Engineering

Automated Valve Solutions



CRPB356R

STANDARD PORT 3-WAY LEAD FREE DIRECT MOUNT BRASS

T-PORTED OR L-PORTED WITH NPT ENDS

1/4" TO 3"

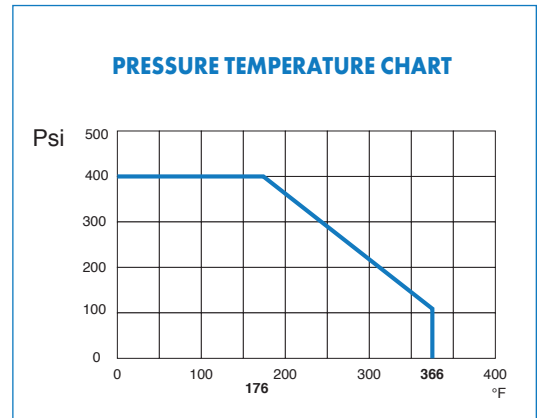
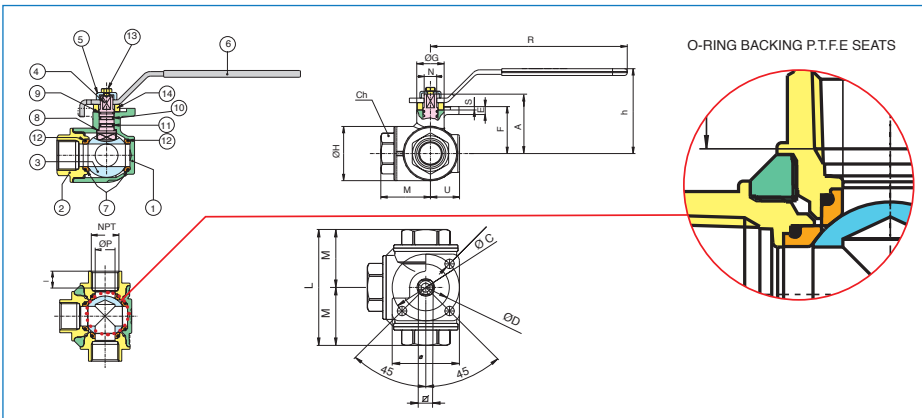
VALVE FEATURES

- 3-way Standard Port Direct Mount Brass
- Pressure rating 400 WOG - 100 WSP
- Temperature range: -4°F to 366°F
- Blow out proof stem, chrome plated brass ball
- P.T.F.E. seats with O-ring backing for low operating torque
- P.T.F.E. seats and double O-ring stem packing
- 100% electronically tested in the open and closed position at 80 psi
- Not to be used for drinking water
- Four seat design for sealing between pressurized ports

SPECIFICATIONS

The CRPB356R series is a forged brass, four seated, L ported or T ported diverter ball valve, that can also be used as a shut-off. The four seats allow the user to use any port as an entry and take continuous flow to another direction when needed. Standard ASME/ANSI B1.20.1 thread depths.

Due to O-ring back seating and O-ring stem seals, both valve series feature extremely low torque for automation. These valves are ISO 5211 direct mounting coupled with solid square stem engagement.



N POS	PART NAME	MATERIAL	N POS
1	BODY	BRASS C38000	1
2	END CONNECTION	BRASS C38000	3
3	BALL	BRASS C38000	1
4	STEM	BRASS C38000	1
5	BUSH	BRASS C38000	1
6	HANDLE	Fe DD 11 UNI EN 10111	1
7	BALL SEAT	P.T.F.E.	4
8	THRUST WASHER	P.T.F.E.	1
9	THRUST WASHER	P.T.F.E.	1
10	O-RING	EPDM	1
11	O-RING	FKM (Viton)	1
12	O-RINGS BODY	FKM (Viton)	4
13	SCREW	STEEL CL 8.8	1
14	WASHER	NYLON (PA6)	1

SIZE	ØP	ØH	I	L	M	CH	R	h	ØG	ØC	U	E	F	A	Stem Size	N	Cv	psi	Weight Lbs	Break Torque in. lbs
1/4"	0.39	1.34	0.39	2.64	1.32	0.87	4.72	2.44	0.87	F03	0.77	0.20	1.20	0.35	9	0.35	3.24	400	1.23	17.70
3/8"	0.43	1.34	0.41	2.64	1.32	0.87	4.72	2.44	0.87	F03	0.77	0.20	1.20	0.35	9	0.35	3.47	400	1.14	17.70
1/2"	0.43	1.34	0.54	2.87	1.44	1.06	4.72	2.44	0.87	F03	0.77	0.20	1.20	0.35	9	0.35	4.16	400	1.21	17.70
3/4"	0.55	1.54	0.55	3.19	1.59	1.26	4.72	2.52	0.87	F03	0.87	0.20	1.29	0.35	9	0.35	7.05	400	1.48	26.60
1"	0.75	1.89	0.66	3.74	1.87	1.61	6.79	2.95	0.94	F05	1.00	0.28	1.63	0.43	11	0.43	12.83	400	2.69	26.60
1-1/4"	0.95	2.36	0.68	4.39	2.19	1.97	6.79	3.17	0.94	F05	1.22	0.28	1.85	0.43	11	0.43	18.73	400	4.14	53.10
1-1/2"	1.18	2.83	0.68	4.86	2.43	2.17	6.79	3.66	1.26	F05	1.49	0.28	2.34	0.43	11	0.43	29.71	400	6.46	88.50
2"	1.50	3.39	0.70	5.73	2.86	2.76	9.06	4.37	1.46	F07	1.75	0.31	2.91	0.59	14	0.43	43.81	400	11.07	106.20
2-1/2"	1.95	4.37	0.93	6.93	3.46	3.35	9.06	4.80	1.46	F07	2.20	0.31	3.35	0.59	14	0.55	70.05	400	19.78	274.40
3"	1.95	4.45	1.02	7.09	3.54	4.13	9.06	4.80	1.46	F07	2.20	0.31	3.35	0.59	14	0.55	70.05	400	19.64	354.30